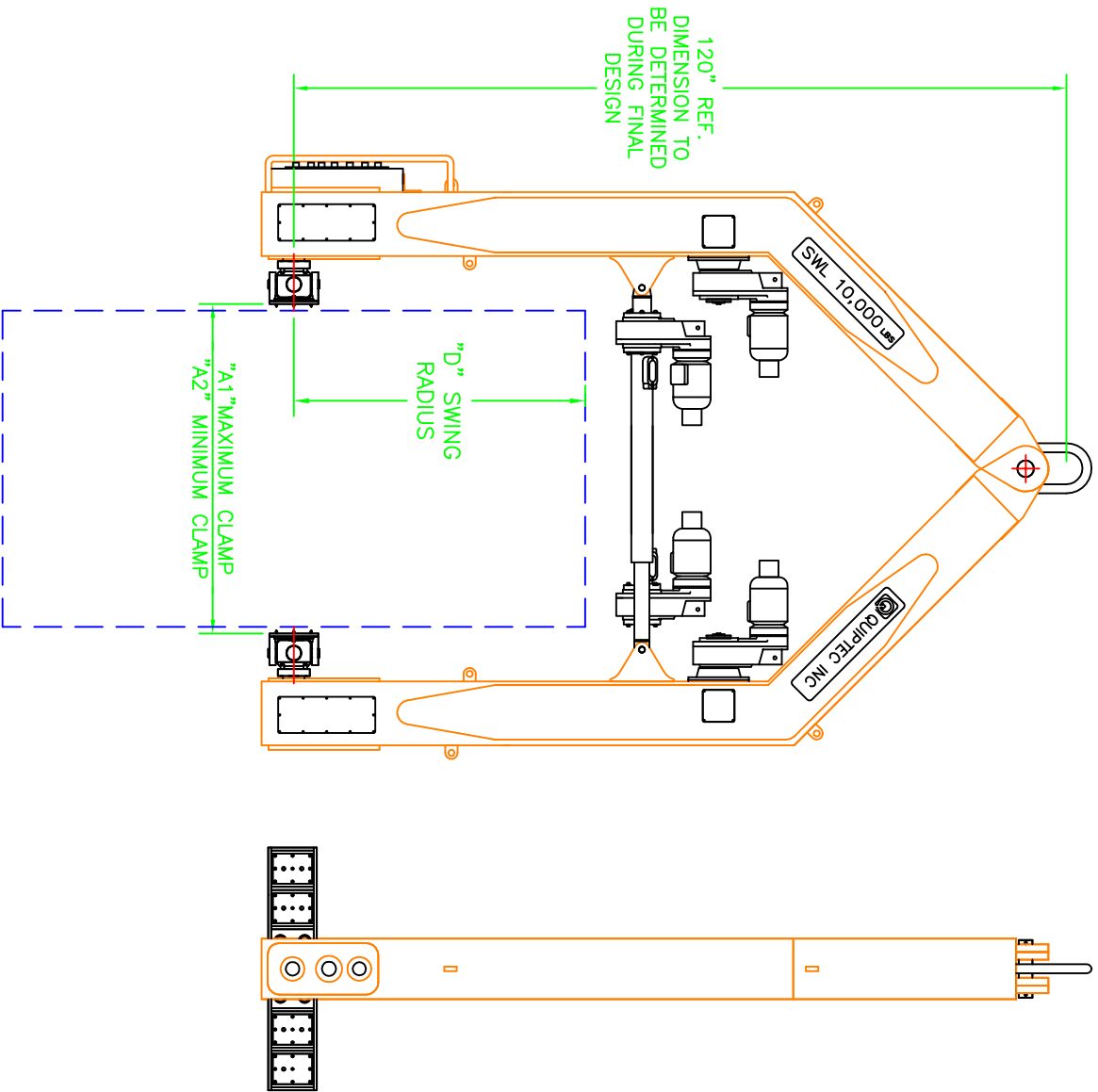


10,000 LBS POWER  
ROLLOVER

MODEL: QSR10K

10,000 LBS POWER  
ROLLOVER



SPECIFICATIONS

DIM. A1	DIM. A2	DIM. D
80"	35"	55"

NOTE: ACTUATOR IS CUSTOM MADE TO SUIT CUSTOMERS MOLD SPECS.  
 : GRIP PADS ARE CUSTOM MADE TO SUIT CUSTOMERS MOLDS.  
 : APPROXIMATE ASSEMBLED WEIGHT OF 3000 lbs.



**QUPTEC INC**

883 BAYVIEW DRIVE  
 BARRIE, ONTARIO CANADA L4N 9A5  
 TEL: (705)721-0101 FAX: (705)721-0401

REVISION		DATE		BY	
1					
2					
3					
4					
5					

QSR10K MOLD MANIPULATOR		QSR10K - LAYOUT	
Drawn By	DD	Scale	NTS
CHK'd		Date	
Treed		App'd	

QSR10K MOLD MANIPULATOR		QSR10K	
Serial #		Material	
Part No.		Drawing No.	QSR10K